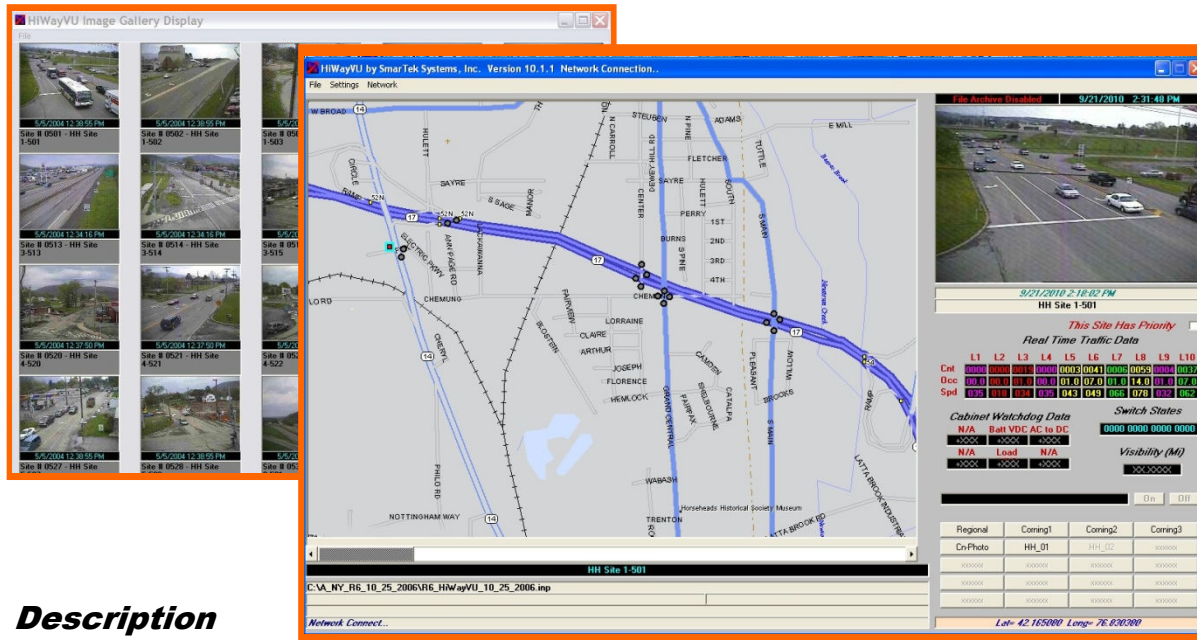


HiWayVU Traffic Monitoring Software for Windows



Description

HiWayVU provides an effective means for automatically acquiring and displaying traffic, environmental, and video image data from T-Box or SAS-1 equipped remote monitoring sites. HiWayVU has built in capability to automatically establish and maintain a network connection with each remote traffic monitoring site. HiWayVU can connect to and monitor significant numbers of remote sites with each having up to 10 traffic lanes, multiple cameras, multiple temperature sensors, and up to 4 analog voltage channels.

Features

A map based situation display that incorporates color-coded site icons for automatic alerting.

A Simple point and click Windows based user interface for setup and operation.

Lane by Lane traffic data presentation area and a color image viewer (JPEG format).

A user enabled audible alert to complement the color-coded icons used for visual alerting.

A multi-level map display which automatically shows all appropriate site icons if the remote site is located within the coverage area corresponding to the map.

The capability which allows the end user to easily include new remote sites as they are deployed.

The capability to archive acquired data and images with date and time stamps.

The capability to run multiple HiWayVU instances on the same computer or multiple computers on a network to share data and images and support multiple operator displays.

The capability for HiWayVU to establish and maintain continuous connections to remote sites via the internet and/or an intranet.

Smartek Systems, Inc.